

Invasive Pest Species

Raoiella indica: Red Palm Mite

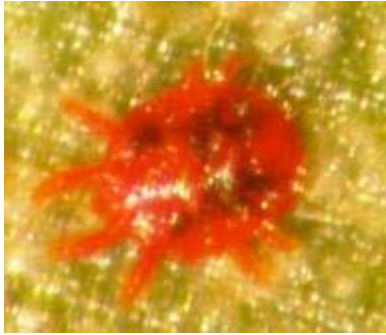


Figure 1 Adult Red Palm Mite

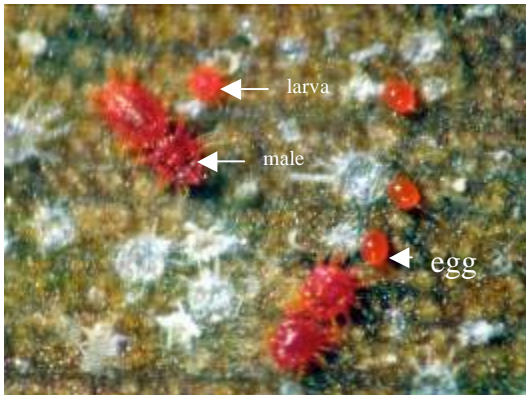


Figure 2 Eggs, larva , males and female deutonymphs. Note white cast skins



Figure 3 Large red palm mite colony on heliconia

For more information contact
Juliet Goldsmith 983-2281/2267

Distribution

Confirmed present in several Caribbean Islands including Martinique, St. Lucia, Dominica, Dominican Republic, Guadeloupe, St. Martin, Trinidad and Tobago and Puerto Rico. It also occurs in India, Pakistan, Sri Lanka, Israel, Egypt, Iran, Sudan, and the Philippines.

Hosts

The red palm mite is a pest of several ornamental and fruit-producing palm species such as coconut and areca palms. In the Caribbean, it has also been found affecting bananas and plantains. *Heliconia* sp, bird of paradise and gingers have also been affected by this mite.

Damage to Crop



Figure 4 Red palm mite damage on coconut palm



Figure 5 Red palm mite damage on banana leaves.

The Red Palm Mite could be an economic threat to the coconut, banana and ornamental plants industries.